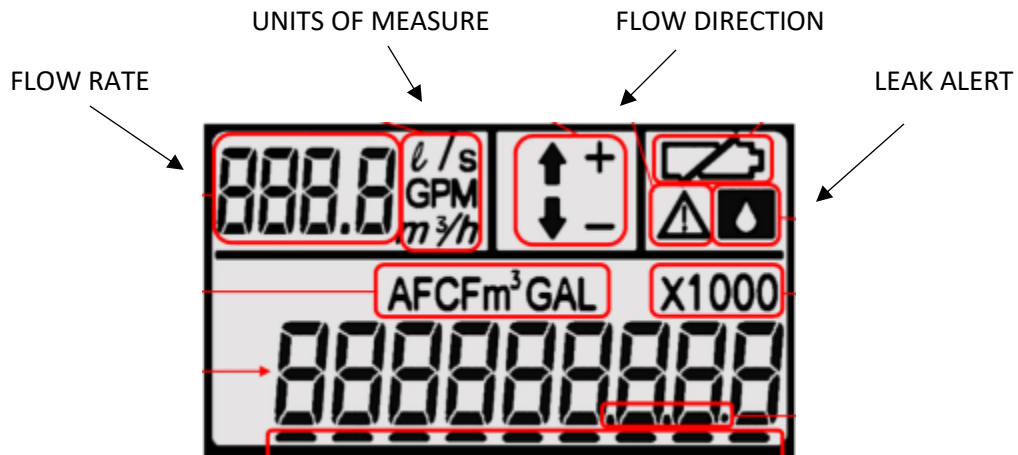


HOW TO READ THE ELECTRONIC REGISTER DISPLAY



Flow Direction

The flow direction will be either positive or negative (forward or reverse). If there is no flow in the line, then neither icon will be displayed.

Flow Rate and Unit of Measure

The Flow Rate is the current volume of water traveling through the water line.

Leak Alert

This alert is triggered by measurement from the register and is transmitted back via the Master Meter proprietary protocol. A "leak" is triggered after 24 hours of continuous 15 minute periods of water flow.

For more information, please call Columbiana Water Board at 205-669-5805.